

Table of Content

1. Installing VAG KKL Interface USB VCP Device Drivers.....	2
Installing VCP Drivers	2
2. Uninstalling FTDI VCP Drivers	9
3. Interface Test and Run with VAG-COM Ver. 409	11
Test VAG KKL-USB Interface	11
Scan with VAG KKL-USB Interface	14

1. Installing VAG KKL Interface USB VCP Device Drivers

The drivers for the USB virtual COM port (VCP) device in the VAG KKL USB version are from FTDI and can be installed with drivers downloaded from <http://www.millisi.net/products.htm>.

The VCP drivers emulate a standard PC COM port. These can be communicated with in the same manner as any other COM port on the PC.

Under Windows XP, the “Found New Hardware Wizard” should be used to install devices when they are connected to the PC for the first time as this is the recommended procedure for reliable device operation.

This guide assumes that you are installing the drivers on to a clean system, i.e., one on which the drivers of the same devices have not been installed previously. If this is not the case, then refer to Section 2 for guidance on uninstalling the VCP drivers before proceeding with installation.

Installing VCP Drivers

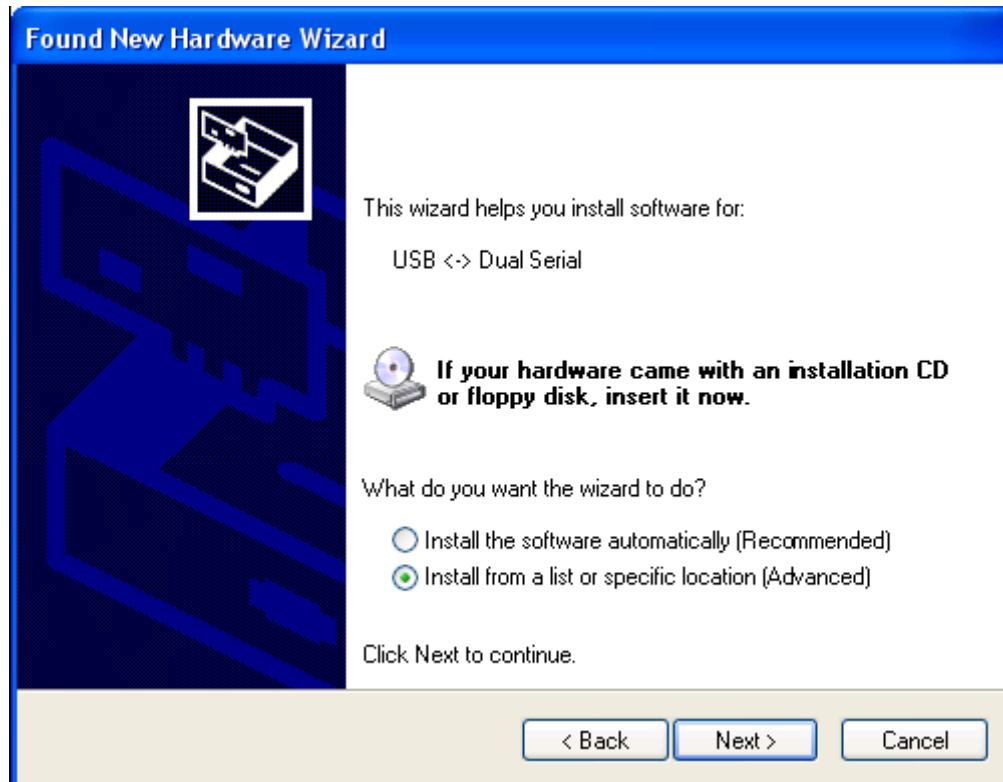
To install the driver for the VCP device of VAG KKL interface under Windows XP and XP SP1, follow the instructions below:

- If VCP devices of the same type have been installed on your machine before and the driver that is about to be installed is different from those installed already, the original drivers need to be uninstalled. Please refer to Section 2: Uninstalling VPC Drivers of this document for further details of this procedure.
- Download the latest available VPC driver from <http://www.millisi.net/products.htm> and unzip it to a location on your PC.
- If you are running Windows XP or Windows XP SP 1, temporarily disconnect your PC from the Internet. This can be done by either removing the network cable from your PC or by disabling your network card by going to the "Control Panel\Network and Dial-Up Connections", right clicking on the appropriate connection and selecting "Disable" from the menu. The connection can be re-enabled after the installation is complete. This is not necessary under Windows XP SP 2 if configured to ask before connecting to Windows Update. Windows XP SP 2 can have the settings for Windows Update changed through "Control Panel\System" then select the "Hardware" tab and click "Windows Update".

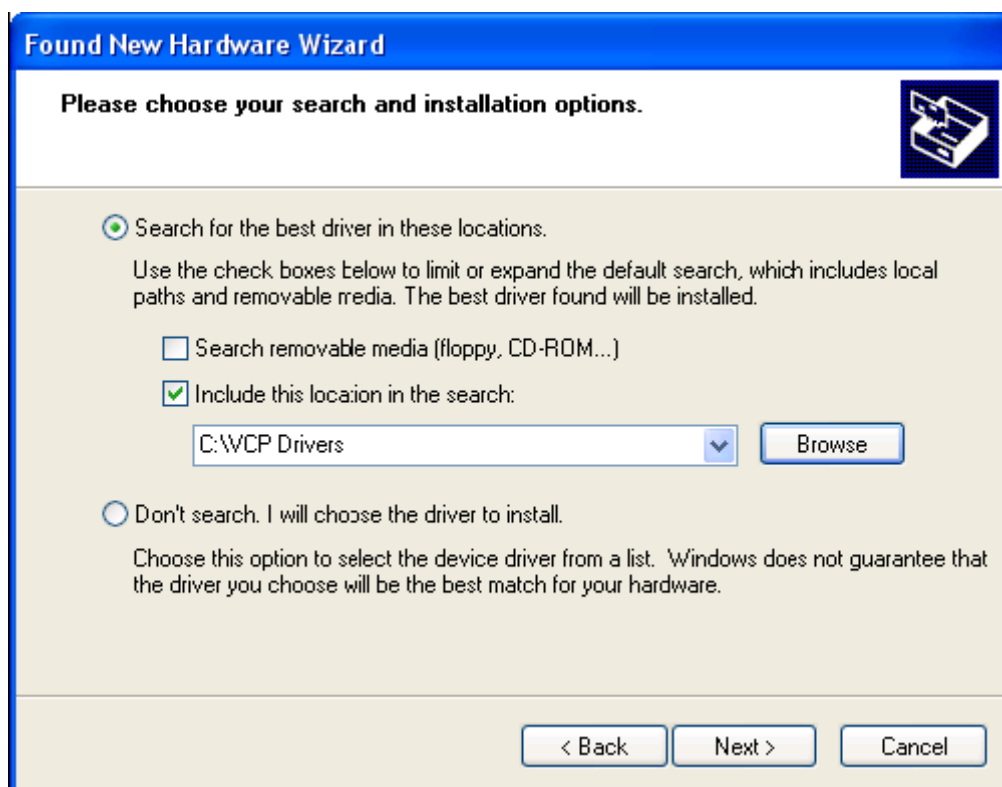
- Connect the VAG KKL interface to a spare USB port on your PC. This will launch the “Windows Found New Hardware Wizard.” If there is no available Internet connection or Windows XP SP 2 is configured to ask before connecting to Windows Update, the screen below is shown. Select "No, not this time" from the options available and then click "Next" to proceed with the installation. If there is an available Internet connection, Windows XP will silently connect to the Windows Update website and install any suitable driver it finds for the device in preference to the driver manually selected.



- Select "Install from a list or specific location (Advanced)" as shown below and then click "Next".



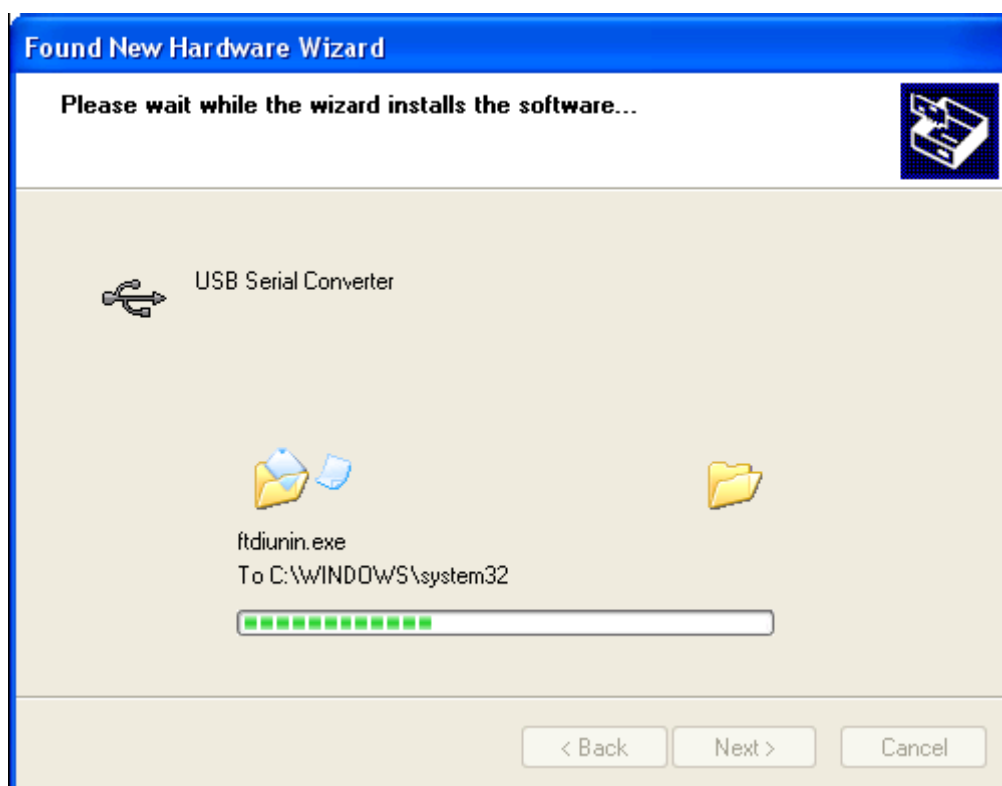
- Select "Search for the best driver in these locations" and enter the file path in the combo-box ("C:\VCP Drivers" in the example below) or browse to it by clicking the browse button. Once the file path has been entered in the box, click next to proceed.



- If Windows XP is configured to warn when unsigned (non-WHQL certified) drivers are about to be installed, the following screen will be displayed. Click on "Continue Anyway" to continue with the installation. If Windows XP is configured to ignore file signature warnings, no message will appear.



- The following screen will be displayed as Windows XP copies the required driver files.

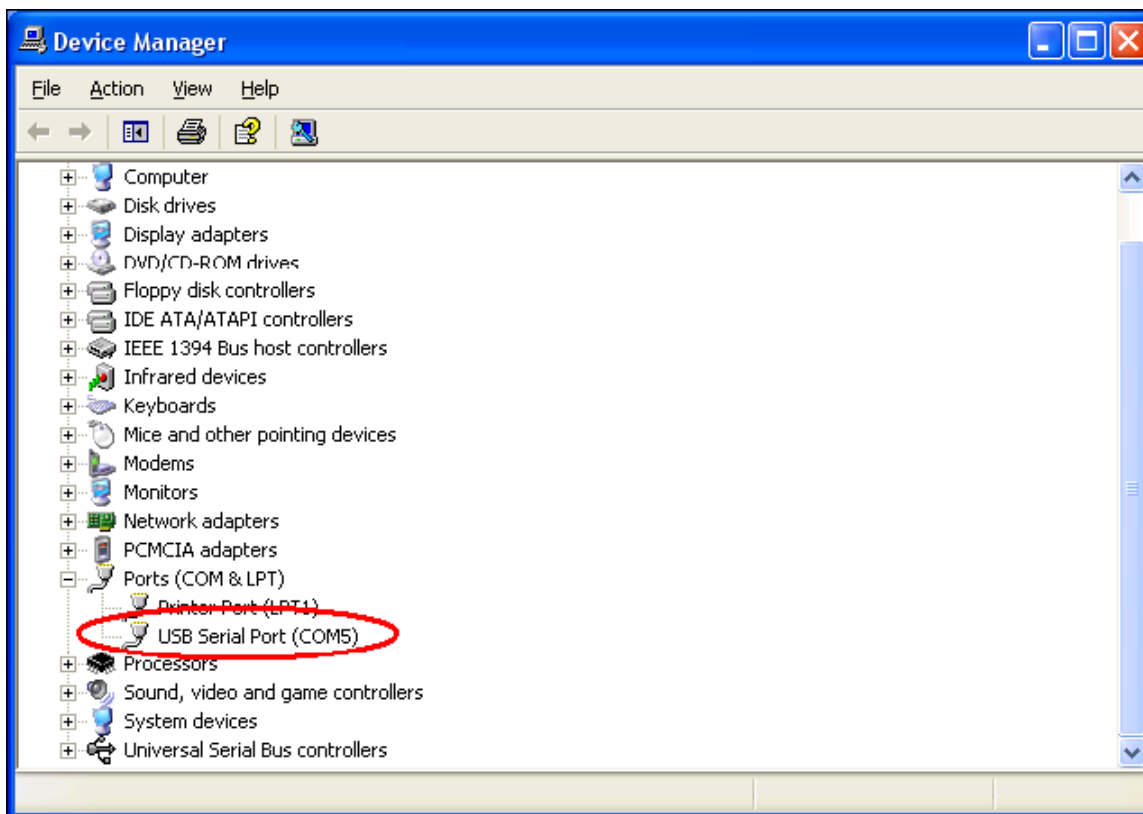


- Windows should then display a message indicating that the installation was successful. Click "Finish" to complete the installation. The VCP device is now ready for use.



- After clicking "Finish", the Found New Hardware Wizard will continue by installing the COM port emulation driver.

- Open the Device Manager (located in "Control Panel\System" then select the "Hardware" tab and click "Device Manager") and select "View > Devices by Type." The device appears as an additional COM port with the label "USB Serial Port".

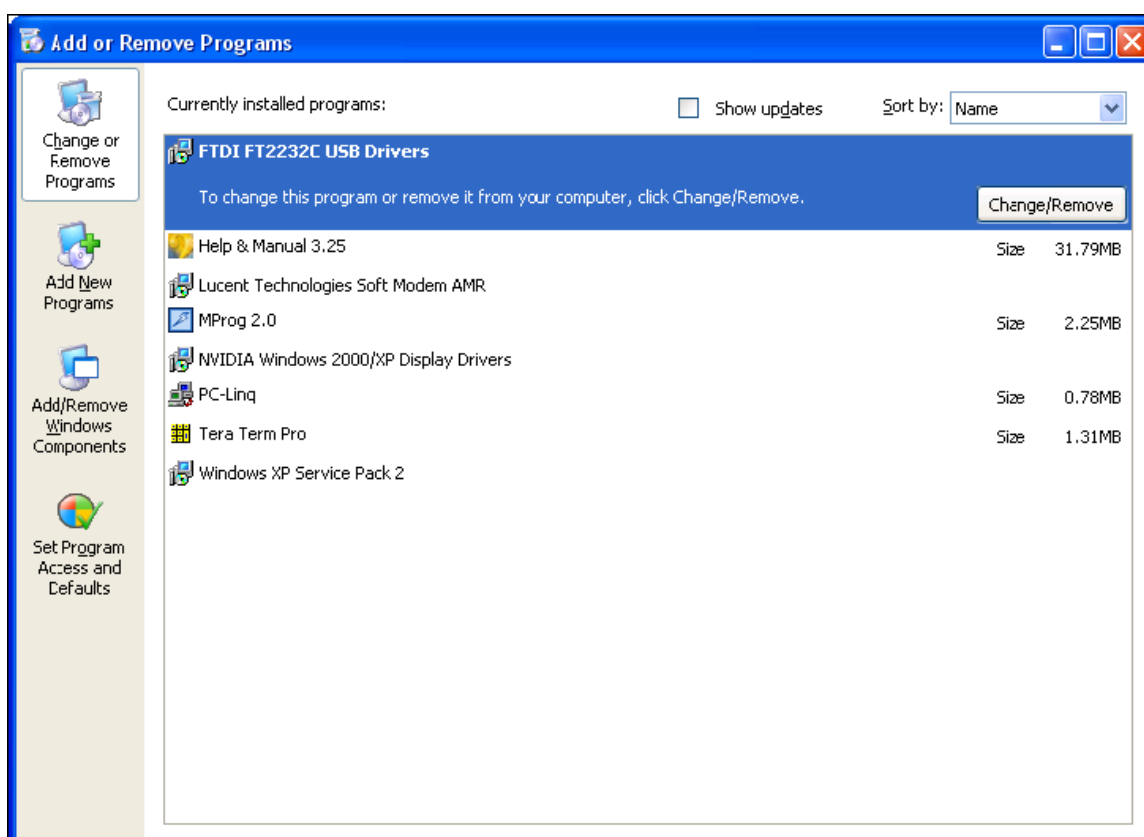


This confirms the successful installation of the VCP device for the VAG KKL-USB interface.

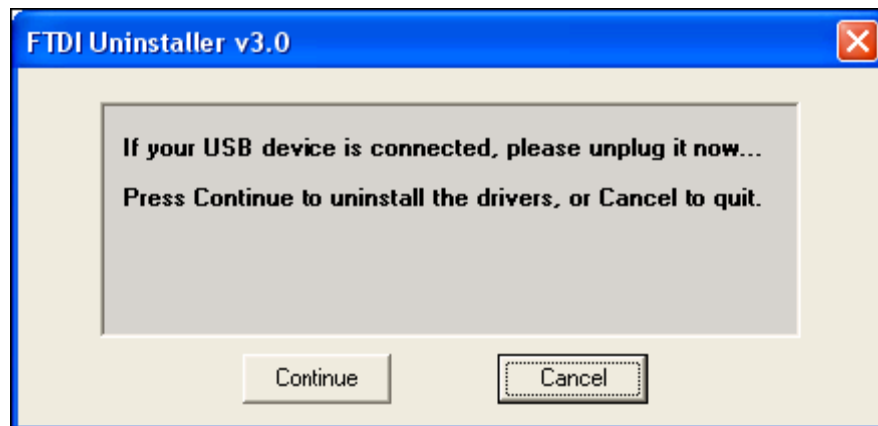
2. Uninstalling FTDI VCP Drivers

To uninstall VCP drivers for VAG KKL USB interface device or any other drivers from FTDI, follow the instructions below:

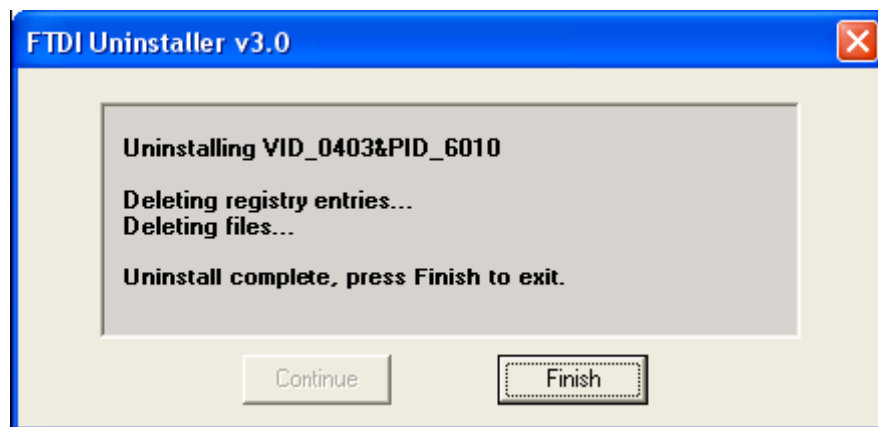
- Disconnect any FTDI devices that are attached to the PC.
- Open the Add/Remove Programs utility located in "Control Panel\Add/Remove Programs".
Select "FTDI FT2232C USB Drivers" from the list of installed programs.



- Click the "Change/Remove" button. This will run the FTDI uninstaller program. Click "Continue" to run the uninstaller or "Cancel" to exit.



- When the uninstaller has finished removing the device from the system, the caption on the "Cancel" button will change to "Finish". Click "Finish" to complete the process.



3. Interface Test and Run with VAG-COM Ver. 409

This note assumes that the VAG KKL-USB interface has been properly installed for its VCP communication through a computer's USB port. Although the following example is for VAG-COM ver. 409, it is identical in procedure if this interface is to be run with VAG-COM ver. 311 or older.

Test VAG KKL-USB Interface

With the VAG KKL-USB interface connected to the PC, plug its OBD-II data link end to your vehicle's data link port. Power up the vehicle. Launch VAG-COM (e.g., ver. 409).

- As soon as it firstly run, VAG-COM will try to establish a configuration file. Follow the instruction according to the balloon indication.



- Click “Options”, you will first see this:



- Make a COM port selection, VAG-COM will interrogate the interface through the selected COM port. If the selection is right, it will report:



Otherwise, it will say:



After the test is passed, click "Save" to create a configuration file.

Scan with VAG KKL-USB Interface

- Upon the successful establishment of communication between the interface and VAG-COM program through computer's COM port, it is ready to run a scan of the vehicle's various electronic control modules (ECMs). From the "Main" menu, access "Select Control Module." Choose "Engine" to scan the engine module. The vehicle is still powered up during the scan. After a few second, the scan is finished with status reports.



- Congratulations! You've made it. The interface shall be working for you. Good luck to you.